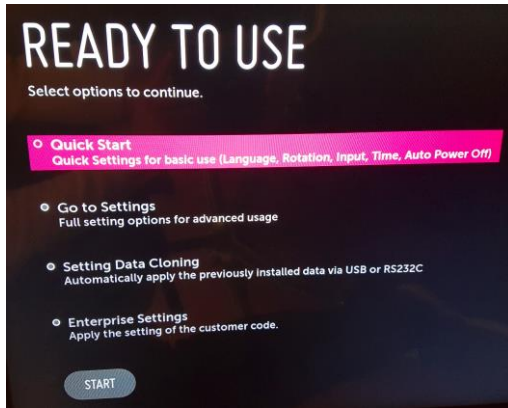


1.1 Installation of LG SM5D and SM5KD:

1.1.1 Start with a Factory Reset

Note: If the display has not been set up before, the display will power on in the "Install menu", shown below. The factory reset can then be skipped.



- Press **Settings** on your remote control and select the **Admin** option.
- Enable the Admin menu, enter the pincode: "0-0-0-0-0-0" and press **OK**.
- Scroll down and select **Factory Reset**. Click **OK**.
- Click **Confirm** and the monitor will reset and power off.
- Do a normal installation of the screen

1.1.2 Screen settings

- Power On
- Select Quick Start and click Start
- Select the **Language** in which to proceed
- Set your local **Time & Date**
- Turn off **Auto Power Off**
- Select **Done**
- Press **Settings** on your remote control
- Select **EZ Settings**
- Select **SI Server Settings**
- Turn on **Fully Qualified Domain Name**
- Type in the Digital Signage URL: <https://ds.otrum.net/lq.zip>
- Change Application Launch Mode to **Local**
- Select Local Application Upgrade and change to **Remote**
- Select **Confirm**
- Select **OK**
- Turn on **Auto Set**
- Turn display **off** and **on** again
- The application will start shortly after boot

1.2 Nice to know

1.2.1 Display software version:

- Press **Settings** on your remote control
- Select **General**
- Select **System Information**

1.2.2 Changing network type

- Press **Settings** on your remote control
- Select **General** and scroll down
- Select **Network**
 - Wired - Connect.
 - Wireless
 - Select SSID
 - Enter Password

1.2.3 Changing Power settings

- Press **Settings** on your remote control
- Select **General**
- Select **Power**
 - Turn off **No Signal Power Off**
 - Turn off **No IR Power Off**
 - Turn off **DPM**